

▶▶▶ LOCATION! LOCATION! LOCATION! ◀◀◀

LAND AUCTION

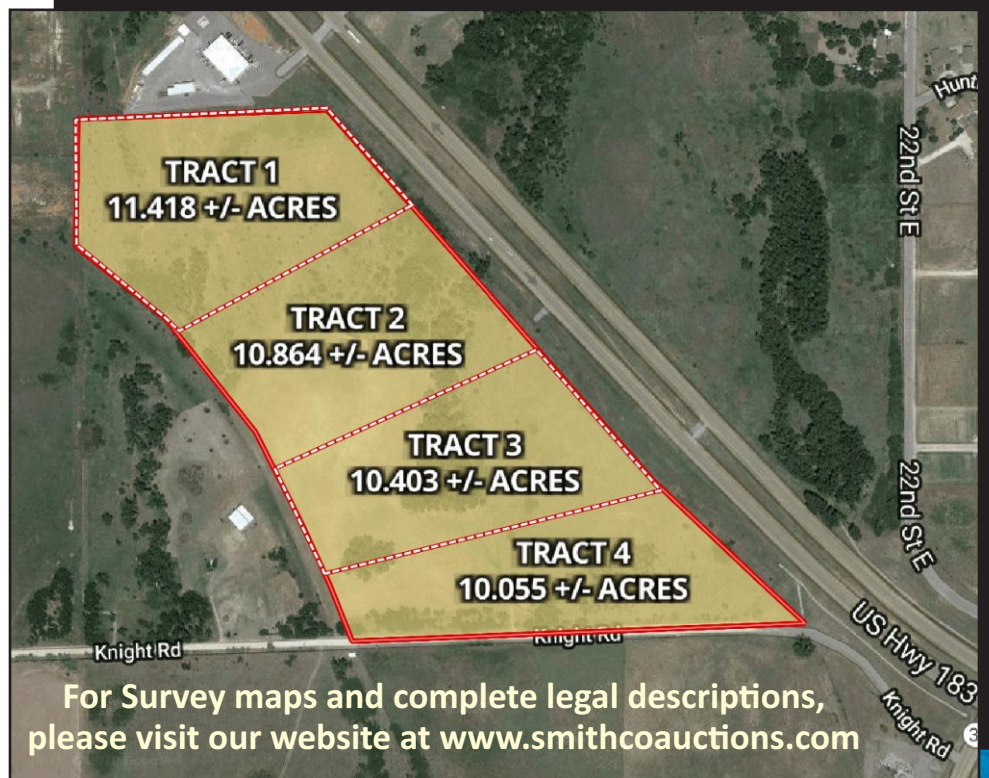
Thursday, April 18th • 10:00 a.m.

SELLING HIGHWAY FRONTAGE!

Auction Location: Woodward Co. Event Center, 1st & Temple Houston Dr., Woodward, OK

Land Location:
PRIME HIGHWAY FRONTAGE
on the south side of Hwy 270/
Williams Ave. From Lakeview
and Williams Ave. the land is
just 2/10 of a mile east on
Hwy 270.

*Tracts will be Offered
Individually and
Collectively
Using the Multi-Par
Method of Auction*



For Survey maps and complete legal descriptions,
please visit our website at www.smithcoauctions.com

There is county road access on the south side and from Hwy 270 on the North.
There is a water well and windmill on the land.

SELLER: Cleo M. Ogden Trust



SMITH & CO
AUCTION & REALTY, INC.

580-254-3975

Auctioneer - Ira Y. Smith, ATS, R.E. Broker

follow us:



"Serving NW Oklahoma and Kansas with Integrity and Pride since 1982"

▶▶▶ LOCATION! LOCATION! LOCATION! ◀◀◀
LAND AUCTION

Thursday, April 18th • 10:00 a.m.

SELLING HIGHWAY FRONTAGE!

Auction Location: Woodward Co. Event Center, 1st & Temple Houston Dr., Woodward, OK

For more information contact Ira Smith 580-334-6001

AUCTION TERMS AND CONDITIONS:

Buyers attending this auction will be required to provide a valid photo ID. By registering, bidder agrees to all terms and conditions as set forth by Smith & Company Auction & Realty, Inc. Buyer will be required to sign contract and place 10% of the purchase price in escrow on sale day, with balance due within 30 days of sale. Seller will provide a current abstract and warranty deed. Taxes prorated to the day of closing. Possession upon closing. Property selling in its present condition with no warranties expressed or implied. All information given comes from resources we believe to be reliable but in no way is guaranteed. Announcements made sale day supersede all prior advertising. Buyers should arrange financing and satisfy themselves with size, location, boundaries, etc. prior to sale day. Sellers are reserving all oil, gas, and other mineral rights.